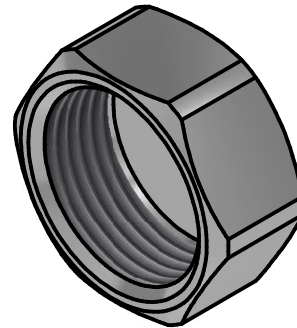
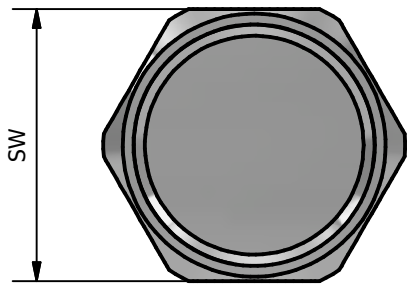
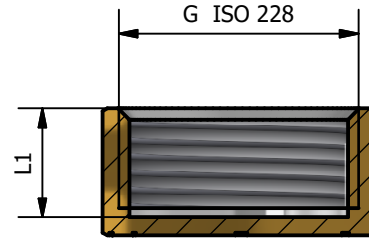
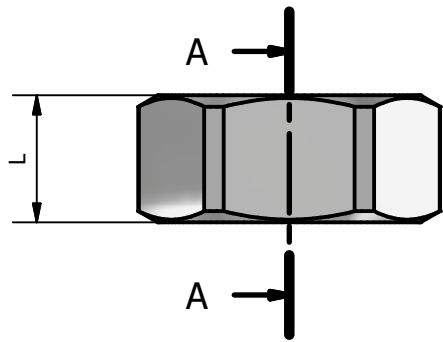


A-A ( 1.2 : 1 )



ARTICLE	SIZE	G	L	L1	SW
107C 18	1/8	1/8	10	8,5	14
107C 14	1/4	1/4	10	8,5	17
107C 38	3/8	3/8	11	9	19
107C 12	1/2	1/2	12	10	23
107C 34	3/4	3/4	14	12	30
107C 01	1"	1"	15,5	13,5	36
107C P4	1"1/4	1"1/4	15,5	13	46
107C P2	1"1/2	1"1/2	18	14	53
107C 02	2"	2"	20	17	65

CONFORMITY	
1)	DM 174 del 6 Aprile 2004
2)	UNI EN ISO 228
3)	UNI EN 1254-4
4)	UNI EN 9227
5)	UNI EN 2819

WORKING PRESSURE MAX FROM 1/8 TO 1"1/4	16 BAR
WORKING PRESSURE MAX FROM 1"1/2 TO 2"	10 BAR
WORKING TEMPERATURE MAX	120°C

00	Prima emissione	Delaini M.	10/07/2012
Rev.	Nota Revisione	Approvatore	Data Approvazione
Toll Gen:	JS14	Stato sup.:	Cromato
Filetto:	ISO 228	Note tecniche:	
Peso lavorato:	Peso grezzo:	N° stampo:	
Materiale: CW 617N EN12165		Disegnatore: Delaini P.	Data: 10/07/2012
TDM Brass s.r.l via Artigiani, 7-9 25030 Maclodio BS Italy tel +39 030 9972217 fax 030 9787089 www.tdmbrass.it email info@tdmbrass.it			

Codice: 107C scheda

Descrizione: Female cap chrome plated